

COLOR & SWATCHES IN ILLUSTRATOR

*Make sure to embed all images!

1. SWATCH GLOBAL GROUP FROM PIC



2. SWATCH OF GRADIENT



3. SWATCHES OF PATTERN



4. SWATCHES OF MIDDLE AGES LIBRARY



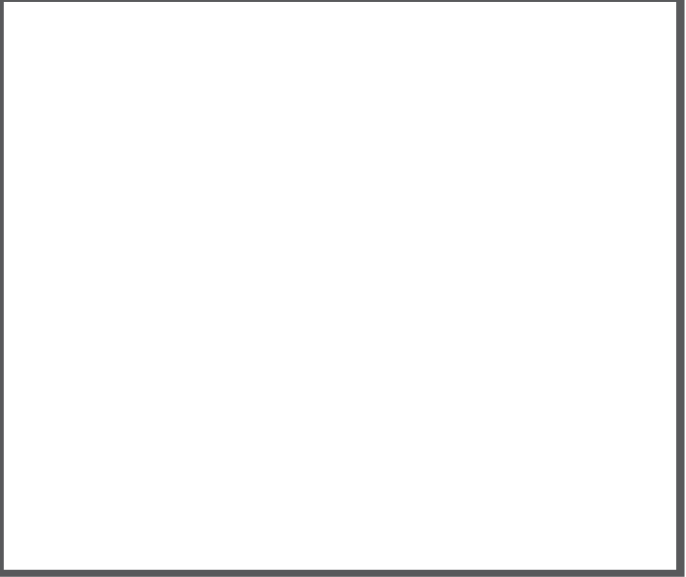
5. SWATCHES BY SMALL LIST VIEW



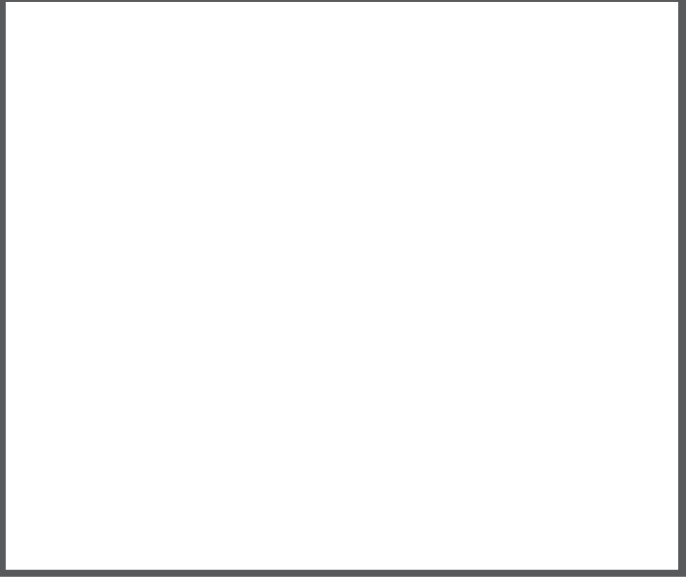
6. SWATCHES BASED OF COLOR CODES



7. COLOR GUIDE: HARMONY RULE



8. COMPLIMENT/INVERSE



Directions:

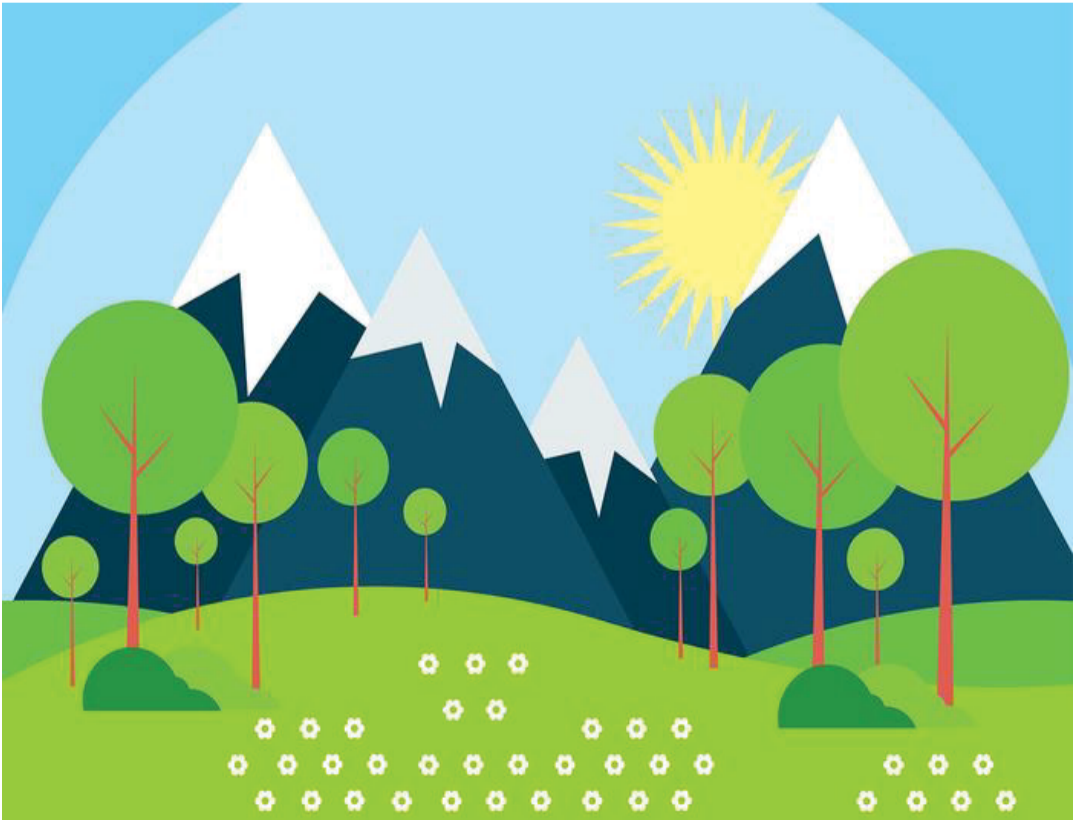
Using colors when you are working is vital to using Illustrator. Download the Swatches worksheet to the right and use the guide How to Swatches file. Turn in when completed as last name + first name + period + Swatches into the Shared Google Drive class folder.

You will be using screen shots of what you are doing and adding these to the artboard to the right in order to demonstrate that you can do the following:

1. Using the image in the Worksheet, start by image tracing the image, expanding it and then create a swatch group for all the colors in the image. Make sure you are using Global Colors.
2. Create 3 gradient swatches (using 3 colors you pick)
3. Make a pattern (any pattern you want with objects), select your new pattern and drag to the swatches panel to create a pattern swatch
4. Show me that you can locate the Middle Ages Colors
5. Display the Swatches as a Small List View
6. Create a New Swatch group and create swatches for the following:
#6D2CE0
R: 0 G: 185 B: 89
C: 70 M: 4 Y: 13 K: 40
K: 67% (Change to Greyscale in Color Panel first)
H: 25 S: 92 B:72
R: 0 G: 33 B: 55
7. Click on the **Pink** object below with the selection tool> Open the Color Guide Panel and then click the drop down menu and choose High Contrast 4 > using the Panel Menu and **Save Colors as Swatches** and take a screen shot!
8. Click on the **Blue** object below with the selection tool > Open Color Panel and using the Panel Menu and make a swatch of the **Complement and Inverse** and take a screen shot!

To Screen shot a selected area on a Mac:
Cmmd + Shift + 4
then drag a box around the area you want to capture
The image will automatically go on your desktop
Then drag the image into AI

To Screen shot on Windows:
Alt + PrtSc
Then Ctrl & V to paste it into AI



Use this object for Exercise Number 7!

Use this object for Exercise Number 8!