

# Adobe Visual Design 1

## Objective: 2.01

Understand the Photoshop Creative Cloud interface and program settings.



**ADOBE VISUAL DESIGN**

Abode Classes

Wake County Public Schools

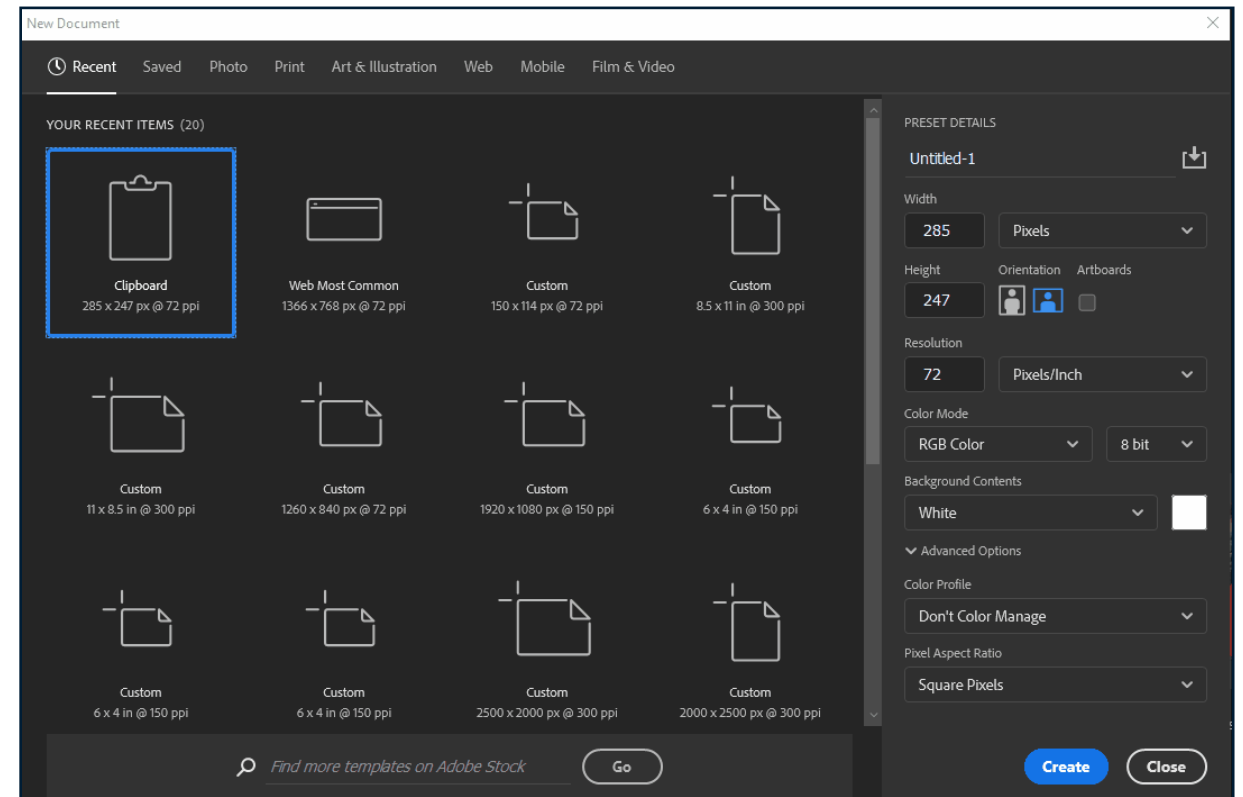


# QUESTIONS TO ASK BEFORE YOU BEGIN:

- Is this meant for the screen or print?
- How large should my image be?
- What resolution should it be?
- What file naming structure can I use to easily locate my files?

# Creating New Documents in Photoshop

- **Creating New Documents**
  - The process of creating a new file in Photoshop.
- **New Document Presets**
  - There are different presets for creating new documents in Photoshop. These can range from picture presets to print presets to video presets.
- **Creating New Documents vs. Opening Images**
  - When you create a new document you need to determine the file size, color mode, resolution, etc. etc. When you Open an image in Photoshop all of those settings are based off of the source image.



# Creating a New Document

## Project Name

The title of your project. When you save, it will default to the Project name and add the proper file extension to it.

## Image Size

Determines the size and resolution of your canvas. You can change units of measure (i.e. pixels, inches, picas, etc.) in the drop down to the right.

## Orientation

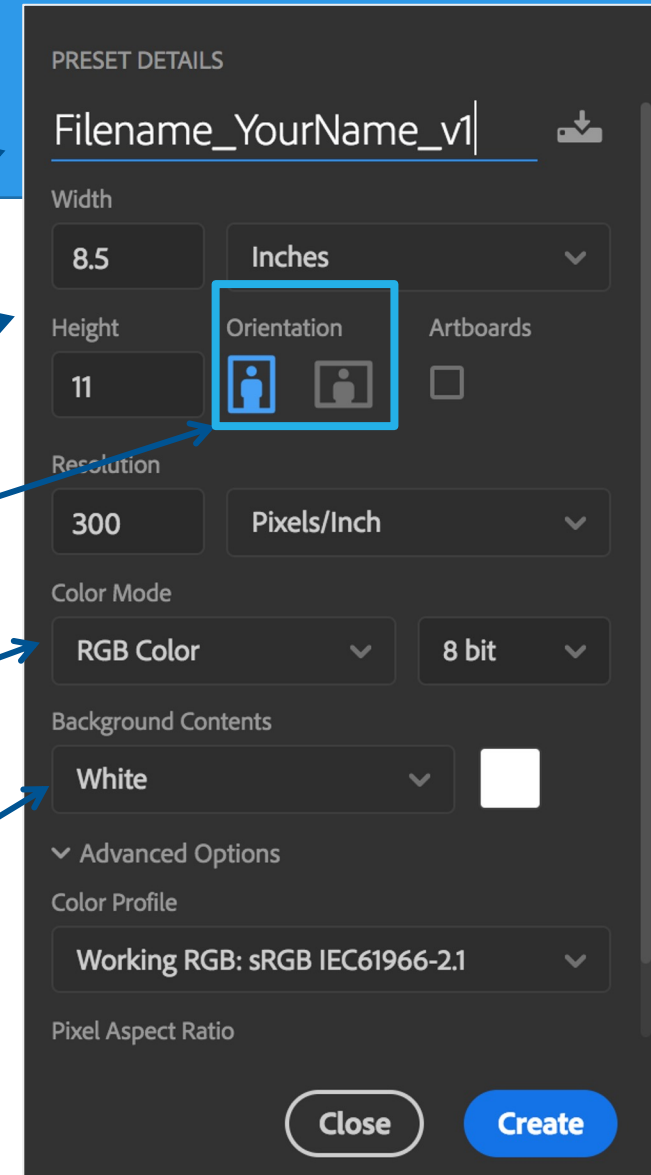
Portrait is when the image is taller than it is wide. Landscape is when the image is wider than it is tall.

## Color Mode

Limits the amount of colors available to match the output settings of your project. For instance, RGB color is meant for screens; whereas CMYK is meant for printers.

## Background Contents

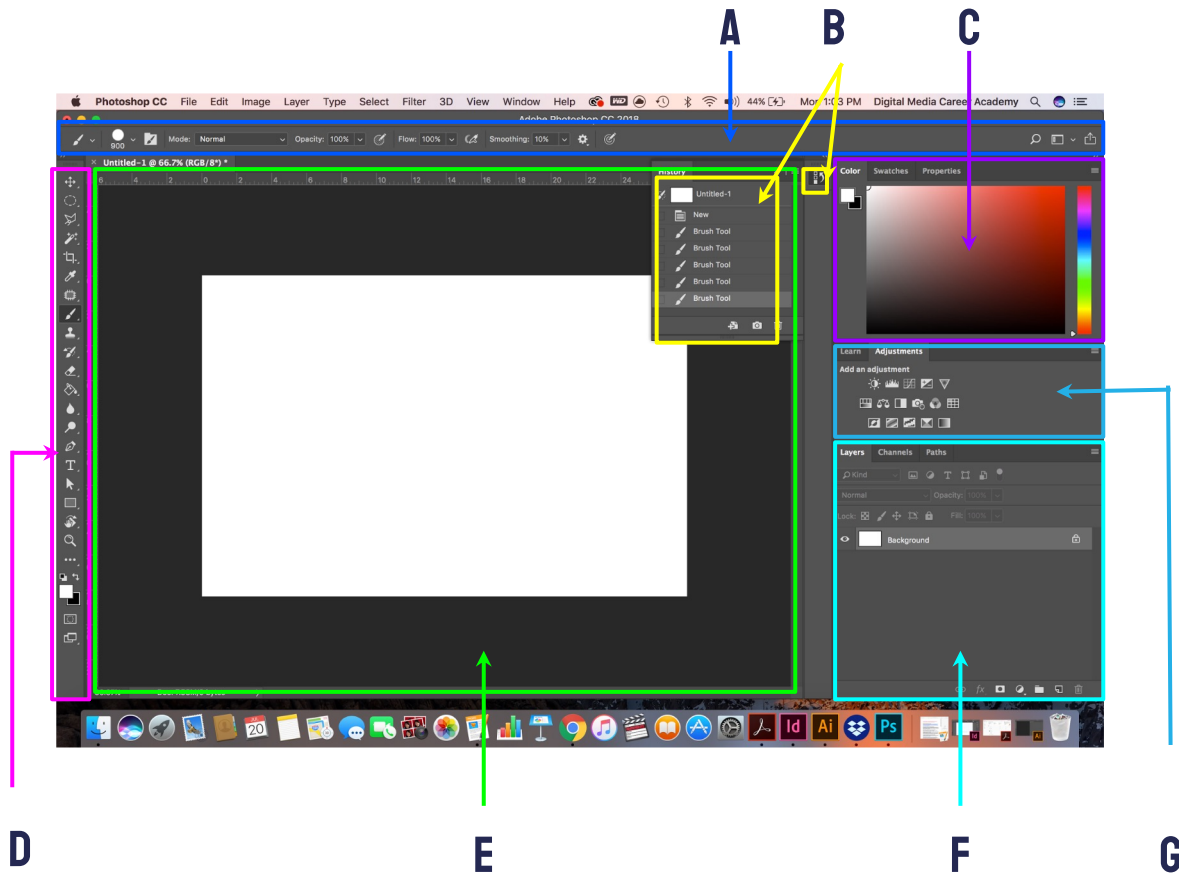
The bottommost layer in the Layers palette, the background layer is always locked (protected), meaning you cannot change its stacking order, blending mode, or opacity (unless you convert it into a regular layer).



# New Document Settings

- **Document Name**
  - Name this when you start to ensure you are organizing your files correctly
- **Dimensions**
  - Use your own or use a template provided by Adobe. This can be changed later if needed
- **Unit of Measurement**
  - Pay attention to your units and choose what works best for you
- **Orientation**
  - Landscape (horizontal) or Portrait (vertical)
- **Resolution**
  - This will be based on how you will be using the image. The higher the resolution, the larger the file.
- **Color Mode**
  - This will be based on if you are printing or using the image digitally
- **Background Contents**
  - White (most common), Black, Color, Transparent, or Custom

# PHOTOSHOP LAYOUT:



## A. CONTROL PANEL

displays options for the currently selected tool.

## B. HISTORY PANEL

jump to any recent state of the image created during the current working session. Each time you apply a change to an image, the new state of that image is added to the panel.

## C. COLOR/SWATCHES/PROPERTIES PANEL

Choose your a color, select one from one of your swatches or view and adjust any of your properties depending on the tool you use.

## D. TOOLS PANEL

contains tools for creating and editing images, artwork, page elements, and so on. Related tools are grouped.

## E. DOCUMENT WINDOW

displays the file you're working on. Document windows can be tabbed and, in certain cases, grouped and docked.

## F. LAYERS PANEL

lists all layers, layer groups, and layer effects in an image. You can use the Layers panel to show and hide layers, create new layers, and work with groups of layers.

## G. ADJUSTMENTS PANEL

tools for making color and tonal adjustments The adjustments you make using the controls and options create non-destructive adjustment layers

# Photoshop Menus

- **Photoshop Menus**

- There are different menus in Photoshop that allow the user to interact with the program as well as edit their images & documents.

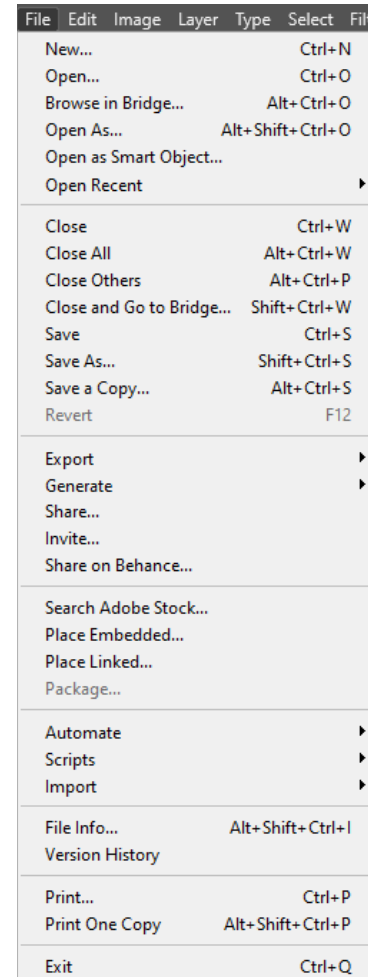
- **File Menu**

- Used to Open, save, export, import, and adjust individual files.

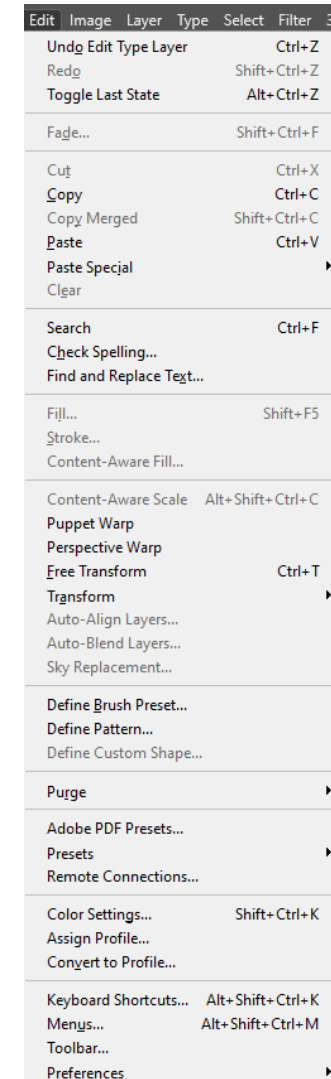
- **Edit Menu**

- Used to edit images inside of Photoshop with certain tasks such as scale. Also used to undo and redo actions and edit the preferences within Photoshop.

## File Menu

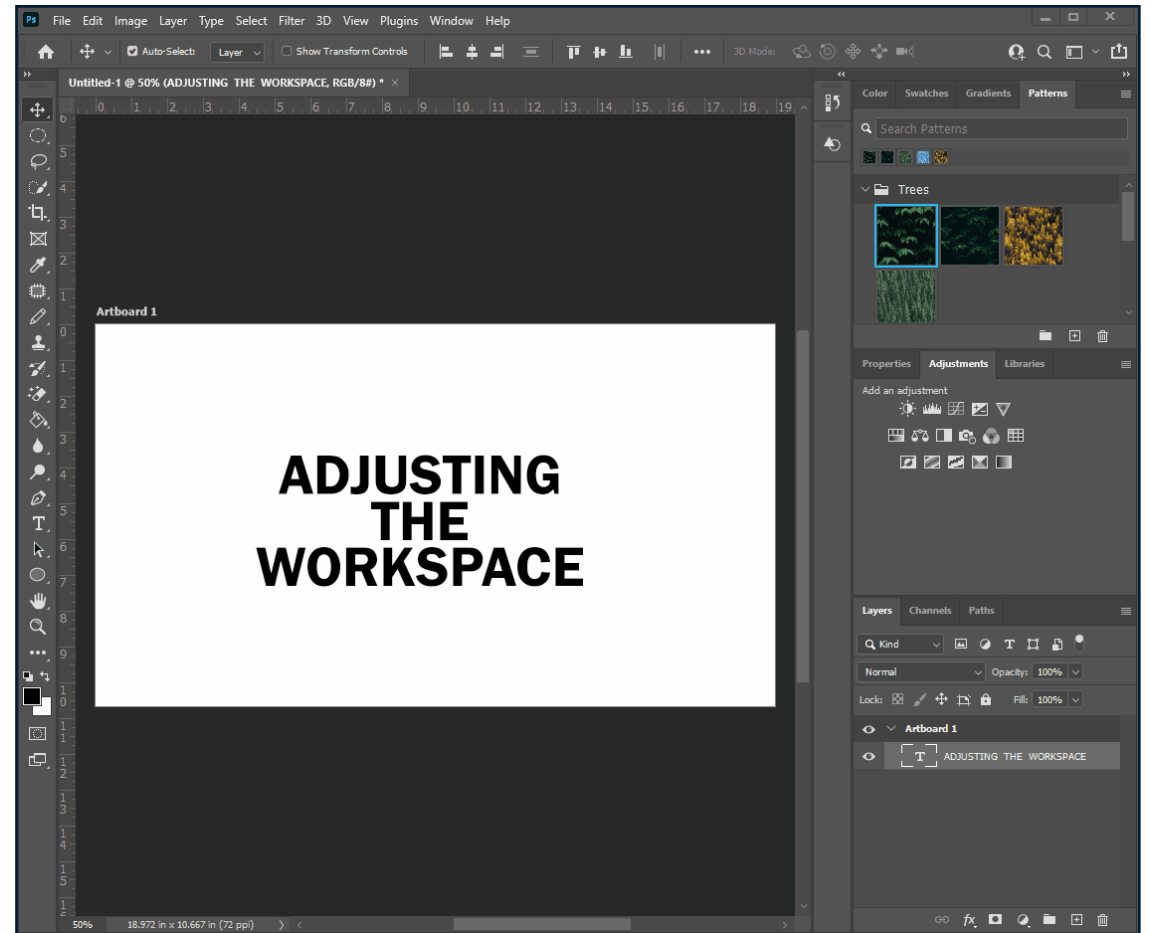


## Edit Menu



# Photoshop Interface: Workspace

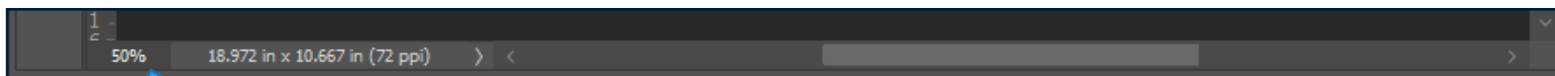
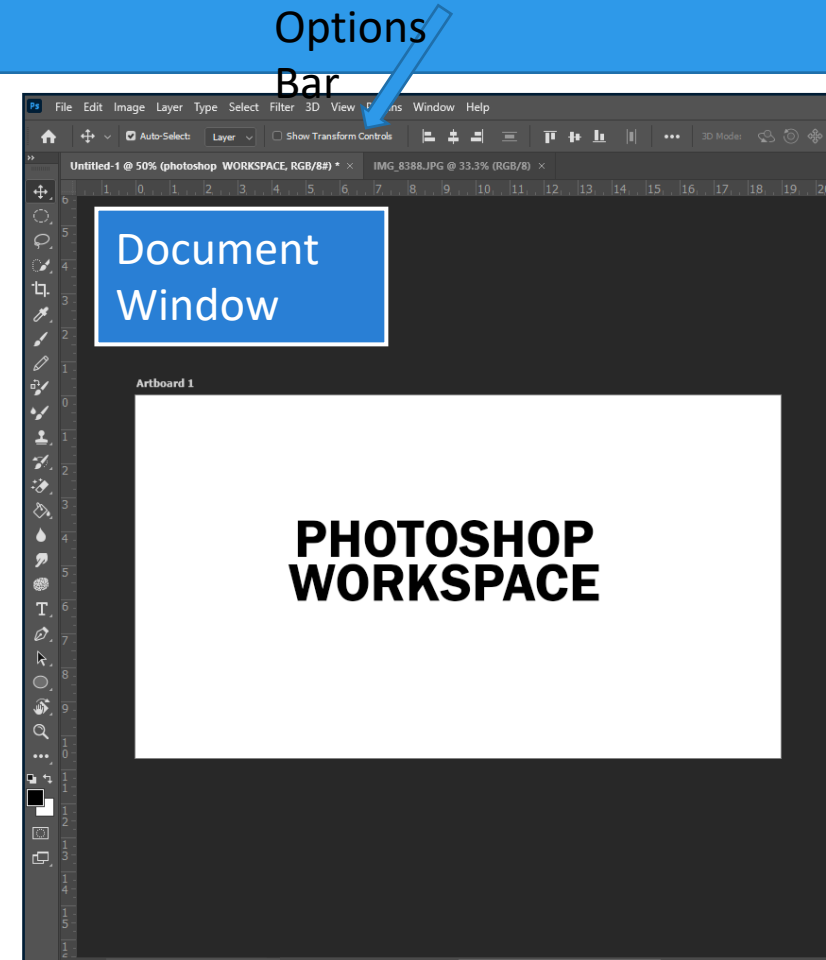
- **Workspace**
  - A specific layout best used for a certain photoshop process (painting, 3D, Typography, etc. etc.).
- **Customize Workspace**
  - All of the panels in Photoshop are modular and can be positioned to how the user likes. Custom workspaces can be saved for future use.
- **Resetting Workspace**
  - You can reset the workspace to a saved layout if changes are made.





# Photoshop Interface

- **Document Window**
  - The tab and artboard of current work in Photoshop.
- **Options Bar**
  - The bar beneath the menus that changes based on the selected tool. Used for adjusting specific tool settings.
- **Status Bar**
  - Small bar at the bottom of the Photoshop window that displays file information such as file size, zoom status, and resolution.



Status  
Window

# Photoshop Interface

- **Panels**

- Photoshop is made up of different panels that each have a different function. Panels range from the layers panel, color panel, tools panel, adjustments panel, character panel, properties panel, etc. etc. Each panel has a specific use based on the need of the user.

- **Photoshop Preferences**

- Settings that affect the way Photoshop runs. For example, how much RAM photoshop uses, the color of guides, and the color of the UI.

# Panels in Photoshop

- Tools Panel
- History Panel
- Layers Panel
- Color Panel
- Channels Panel
- Swatches Panel
- Adjustments Panel
- Properties Panel
- Character Panel
- Brushes Panel

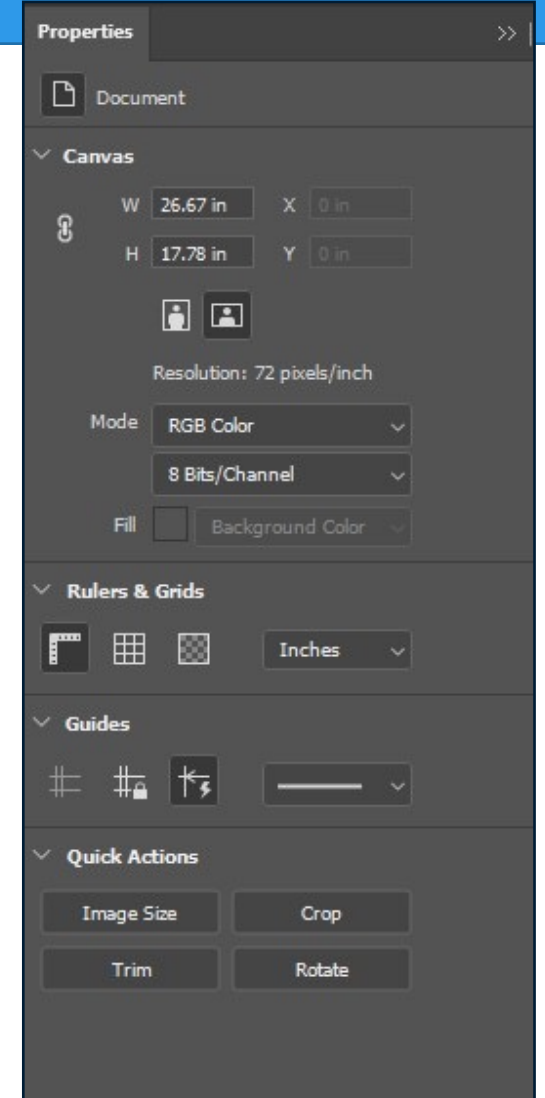
Tools Panel



Layers Panel



Properties Panel



## CURSOR EXAMPLES:



Move Cursor



Magic Wand  
Cursor



# The Toolbar

Photoshop has a lot of tools that you can use. These tools can be accessed through the “Tool Bar” [usually found on the left]. If you do not see the toolbar, you can load it by going to Window > Tools at the menu bar on the top of your screen.

Tools are grouped together with similar function. If you click and hold the icon on the toolbar, a dropdown will appear with other possible tools. You can also access these tools using keyboard commands (by holding “Shift” + [the proper keyboard letter]). By doing so it will toggle between all of the tools in that category. The default tools are defined in the next page.

Each tool changes the “Control” panel options (located above your “Document Window”). You can also see a change in the cursor icon to let you know what tool is being used [as well as the cursors size & shape}.

# TOOLS:



## Move (V)

Move a selection or an entire layer



## Marquee (M)

Select rectangles, ellipses, and 1-pixel rows and columns.



## Lasso (L)

Draw freeform segments of a selection border.



## Quick select (W)

"Paint" a selection using a brush tip. The selection jumps to edges of shapes.



## Crop (C)

Crop or straighten photos.



## Eyedropper (I)

Select a color from an area within your image.



## Spot heal (J)

Correct imperfections, causing them to disappear into the image



## Brush (B)

Applies color with brushstrokes in a variable tip.



## Stamp (S)

Paints a copy of the selected state into the current image window.



## History brush (Y)

Copies pixels to a new location in the image.



## Eraser (E)

Changes pixels to the background color or to transparent



## Gradient (G)

Creates a gradual blend between multiple colors



## Blur

Blurs hard edges in an image.



## Dodge (O)

Lightens areas in an image.



## Pen (P)

Lets you draw smooth lined paths.



## Text (T)

Create type on an image.



## Path Selection (A)

Make shape or segment selections showing anchor points, direction lines, and direction points.



## Rectangle (U)

Draw shapes and lines in a normal layer or shape layer.



## Hand (H)

Moves an image within its window.



## Zoom (Z)

Magnifies and reduces the view of the image.



## Quick mask (Q)

A red overlay appears as you make a selection. You can paint and refine your selection.

# Photoshop Menus

- **Image Menu**

- Used to edit images with certain tasks such as image adjustments. Can also be used to change the document color mode and document size.

- **Layer Menu**

- Used to create new layers, group layers, merge layers, as well as edit layers with masks.

- **Type Menu**

- Used to edit and adjust text.

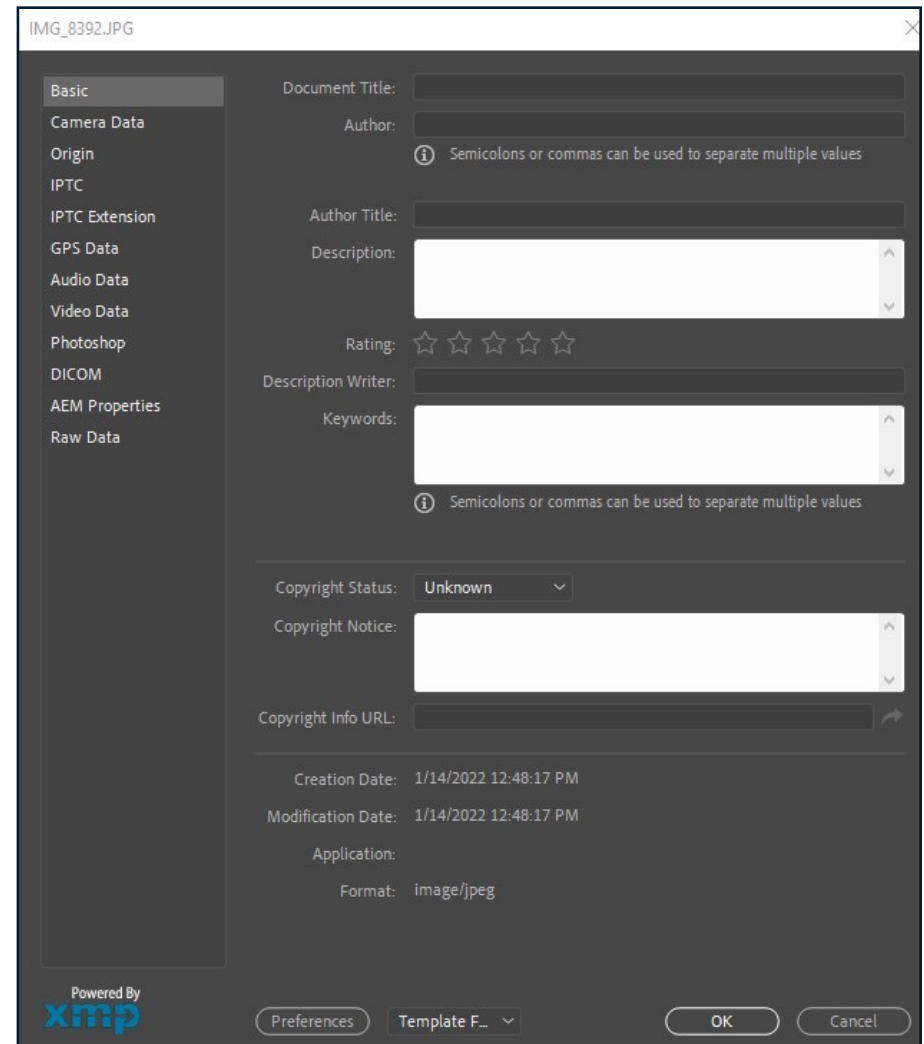
# Photoshop Menus

- **Select Menu**
  - Used to select objects within images as well as edit and refine selections.
- **Filter Menu**
  - Used to apply preset filters and effects to images.
- **View Menu**
  - Used to adjust the view in Photoshop such as how zoomed in the document is, the screen mode, as well as viewing the grid and rulers. Also used to create guides.
- **Window Menu**
  - Used to open panels and edit / reset the current workspace.

# File Handling

- **File Info**
  - Specific information that can be embedded into the file such as the author and copyright status.
- **AutoSave**
  - Recovery setting in Photoshop that will save the file you are working on based on settings set in preferences command window.

## File Info



The screenshot shows the 'File Info' dialog box for a file named 'IMG\_8392.JPG'. The dialog is divided into a left sidebar with a list of categories and a main area with input fields. The 'Basic' category is selected in the sidebar. The main area contains the following fields:

- Document Title: [Empty text field]
- Author: [Empty text field]
- Author Title: [Empty text field]
- Description: [Large text area]
- Rating: [Five star icons, all empty]
- Description Writer: [Empty text field]
- Keywords: [Large text area]
- Copyright Status: [Dropdown menu showing 'Unknown']
- Copyright Notice: [Large text area]
- Copyright Info URL: [Text field with a right-pointing arrow]

At the bottom of the dialog, there is a 'Powered By xmp' logo, a 'Preferences' button, a 'Template F...' dropdown menu, and 'OK' and 'Cancel' buttons.



# Non-Printing Elements in Photoshop

- **Non-Printing Elements**

- Aspects of Photoshop that aid design and alignment but do not show up on printed or exported images.

- **Rulers**

- Allows the user to see the exact dimensions of a document and exactly where on a document objects are placed.

- **Guides**

- Lines created using rulers or dimensions in a document that allow the user to align objects to specific locations.

- **Smart Guides**

- Temporary snap-to guides that appear when you move objects; help you align, edit, and transform objects relative to other objects

- **Grids**

- A non-printing Element that divides the document into equal parts rectangular parts. Used for alignment and balance purposes.

