



# Adobe Academy Digital Design



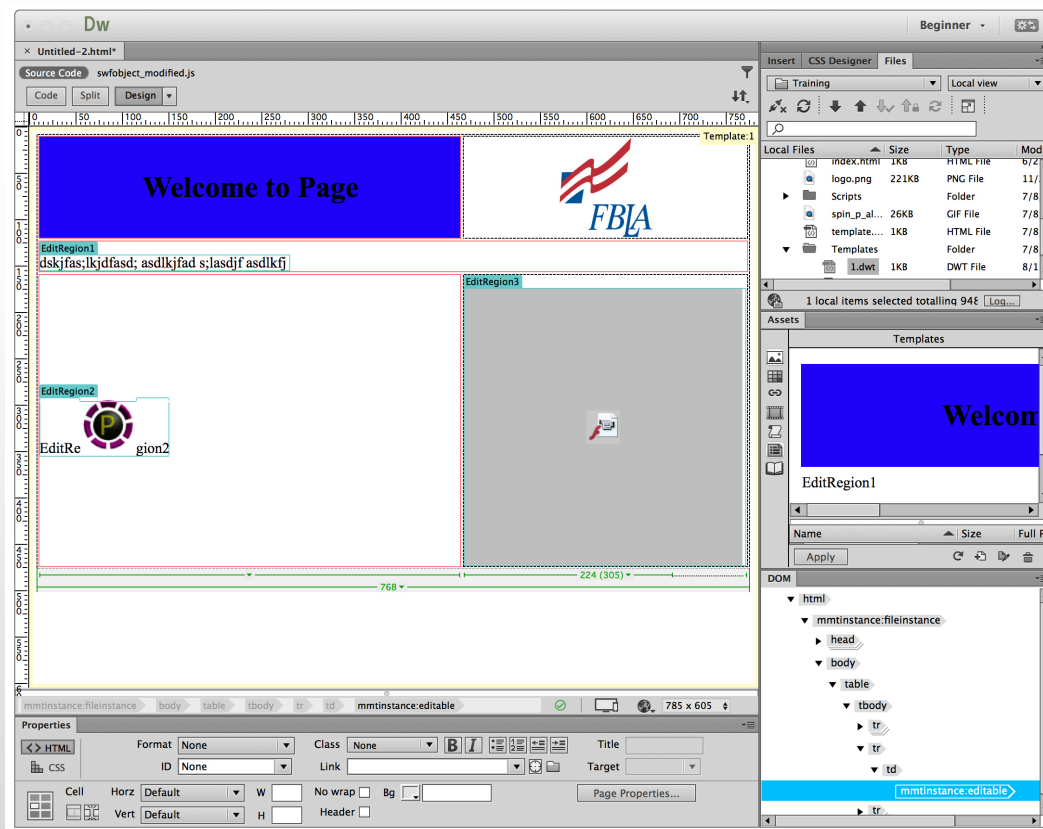
**Objective 3.00**

**Understand the Adobe Dreamweaver CC interface.**



# DREAMWEAVER DESIGN PANELS

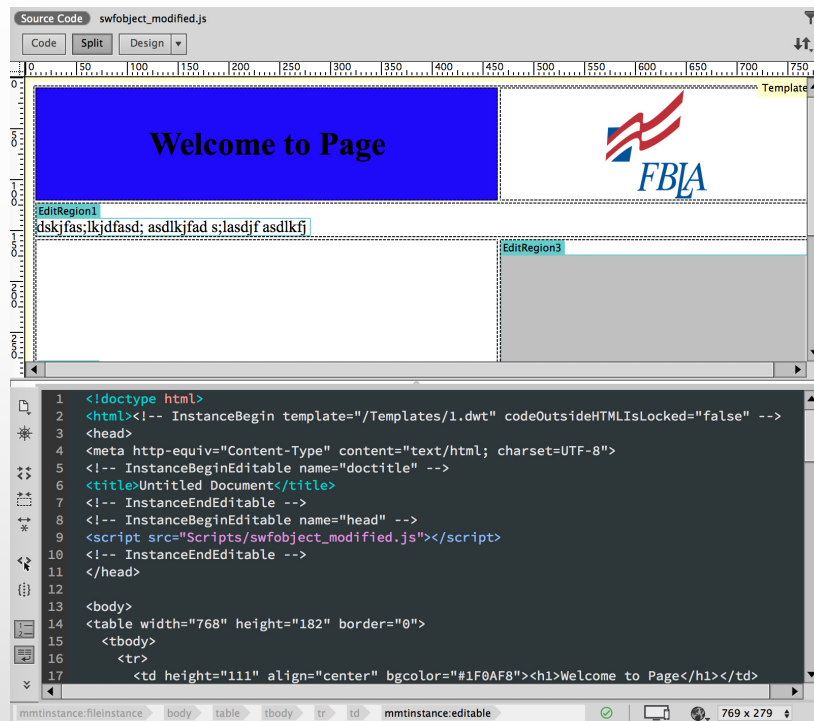
- Design Panel
  - Code View
  - Split View
- Files Panel
- Insert Panel
- Property Inspector
- Assets Panel



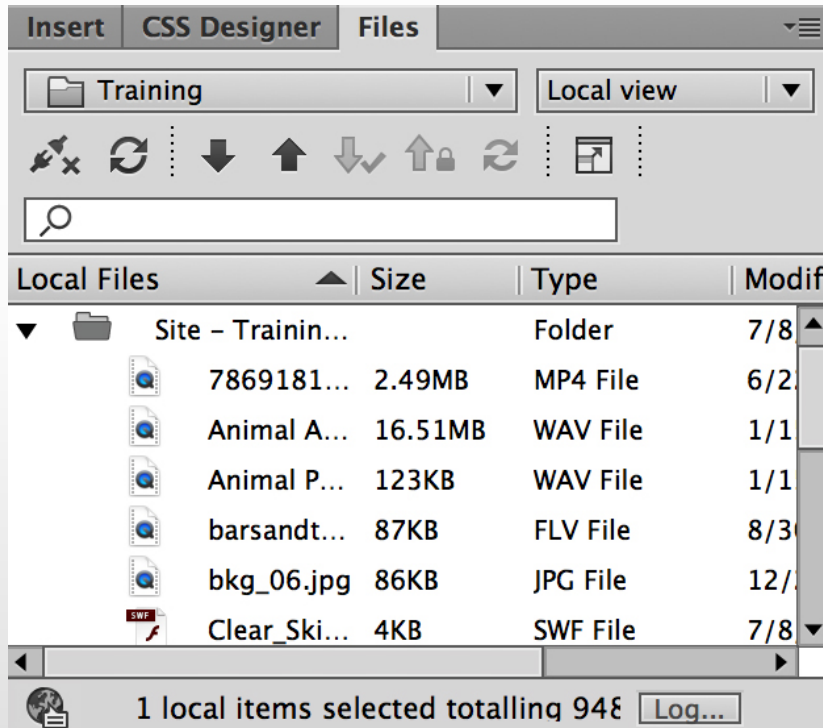


# DESIGN VS. CODE VS. SPLIT VIEW

- Design view is a WYSIWYG interface.
  - Add content and the code is written automatically.
- Code view can see and write code.
- Split view can see design and code views. Can edit in either area.



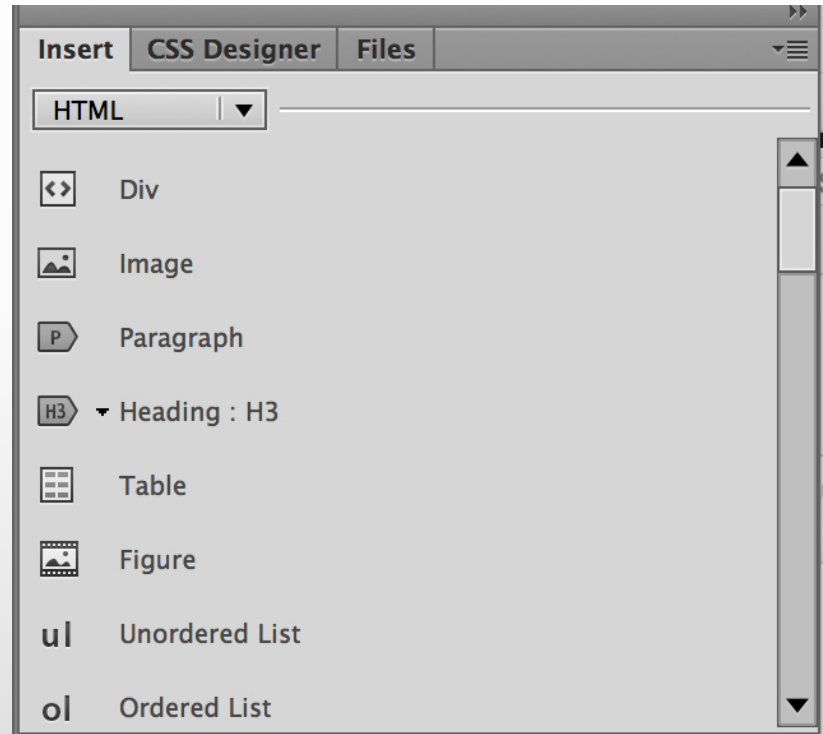
# AA FILES PANEL



- Enables you to view files and folders, whether they are associated with a Dreamweaver site or not.
- Perform standard file maintenance operations, such as opening and moving files.

# AA **INSERT PANEL**

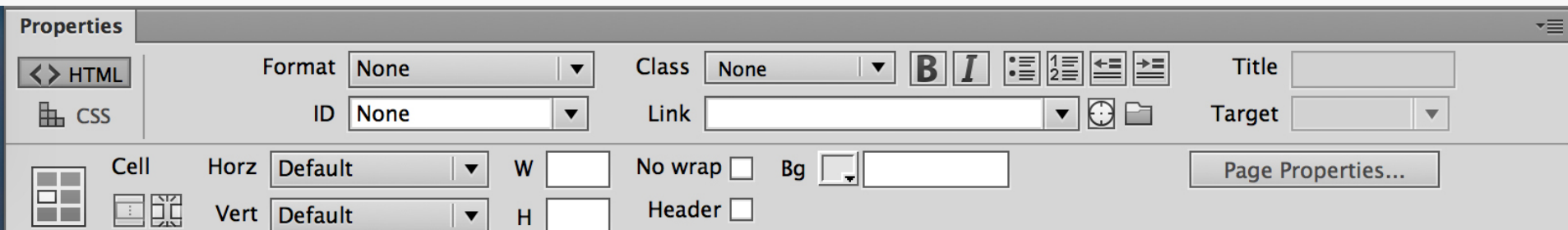
- Contains buttons for creating and inserting objects such as tables and images.
- The buttons are organized into categories.





# PROPERTIES INSPECTOR

- Lets you examine and edit the most common properties for the currently selected page element, such as text or an inserted object.
- The contents of the Property inspector vary depending on the element(s) selected.





# **ASSETS PANEL**

- Use the Assets Panel to manage assets in the current site including images, movies, colors, scripts, and links.
- The Assets Panel also provides access to two special types of assets:
  - Libraries
  - Templates.
- Assets can be tracked, previewed or dragged directly into the web document.



# ***CUSTOMIZE WORKSPACE***

- Your Dreamweaver workspace can be changed to best meet your needs as a designer.
  - Change document views
  - Rearrange/resize windows and panels
  - Add or remove tools on toolbar
  - Create and save custom workspace
- These same techniques can be used to customize other Adobe software.





# QUESTIONS TO CONSIDER

- Identify some Dreamweaver panels that you haven't seen in other Adobe software?
- What is the Properties Inspector comparable to in other Adobe software?